



Yearling Close, Great Amwell, SG12 9XP

£4,000 Per month

Taylor Phelps



5

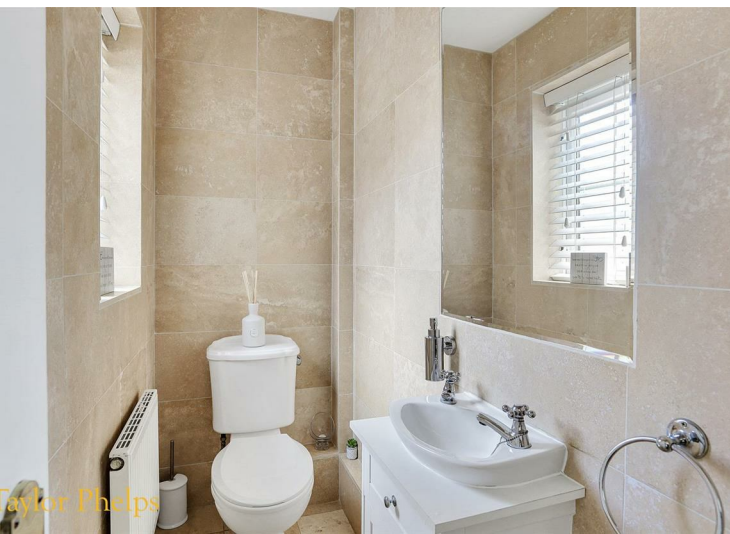


3

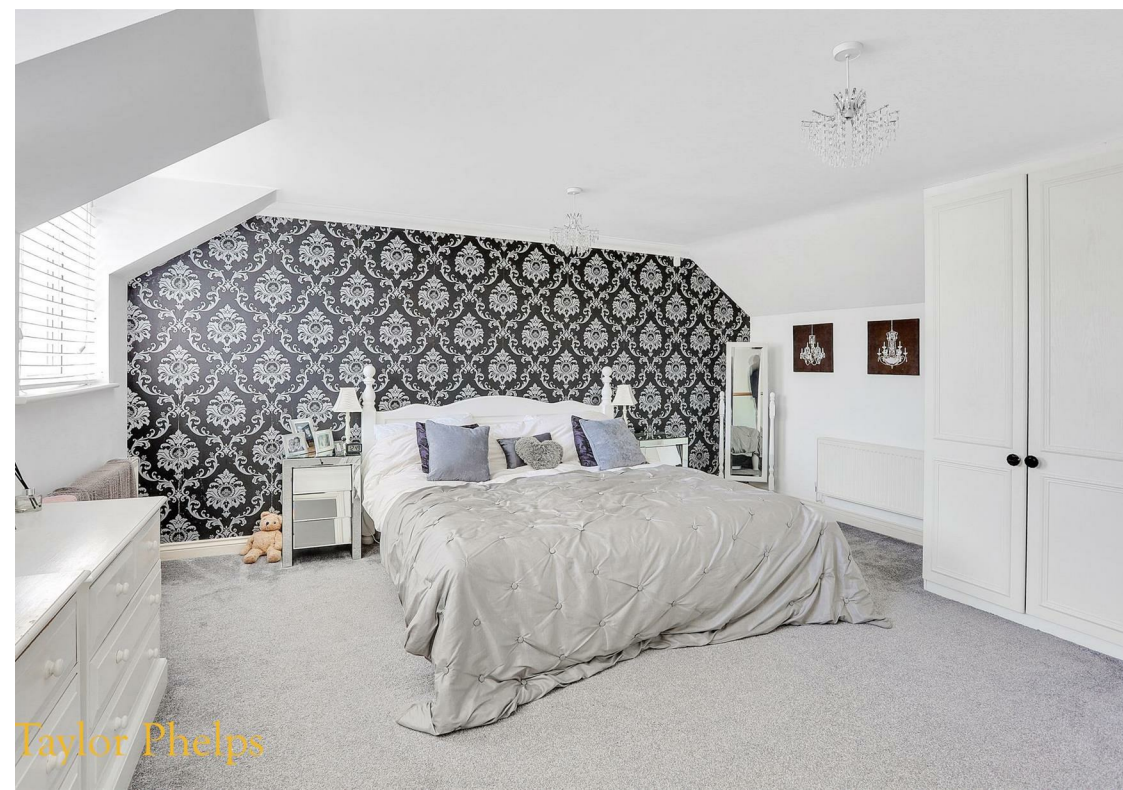
Taylor Phelps

Estate Agency















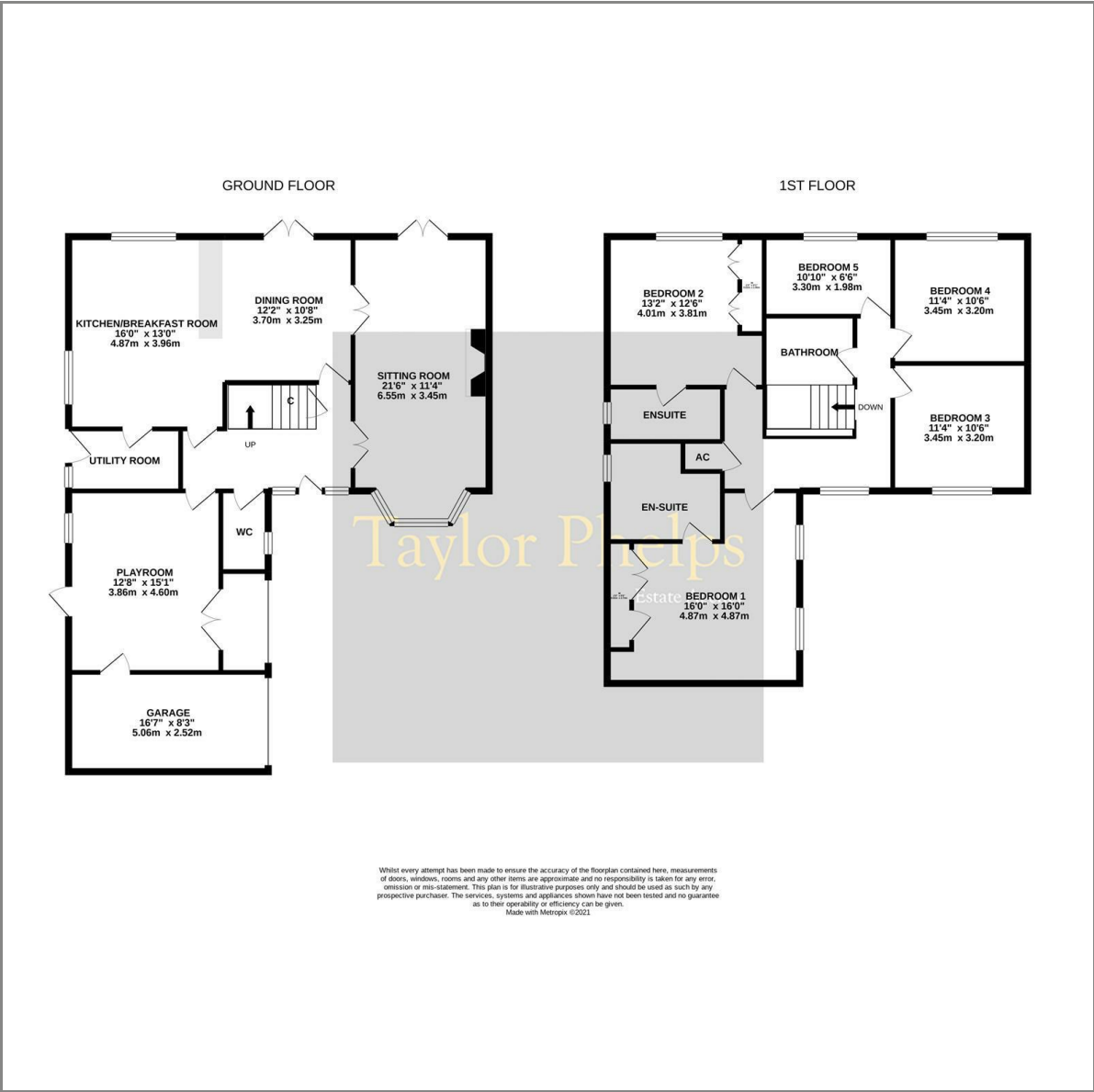








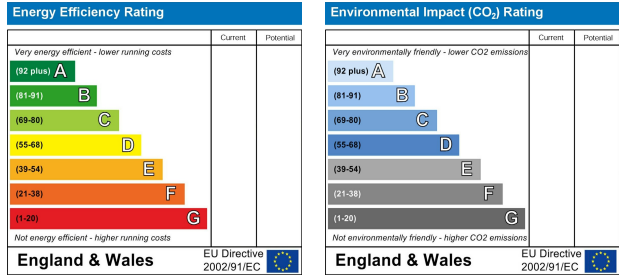
Floor Plan



Area Map



Energy Efficiency Graph



These particulars, whilst believed to be accurate are set out as a general outline only for guidance and do not constitute any part of an offer or contract. Intending purchasers should not rely on them as statements of representation of fact, but must satisfy themselves by inspection or otherwise as to their accuracy. No person in this firms employment has the authority to make or give any representation or warranty in respect of the property.